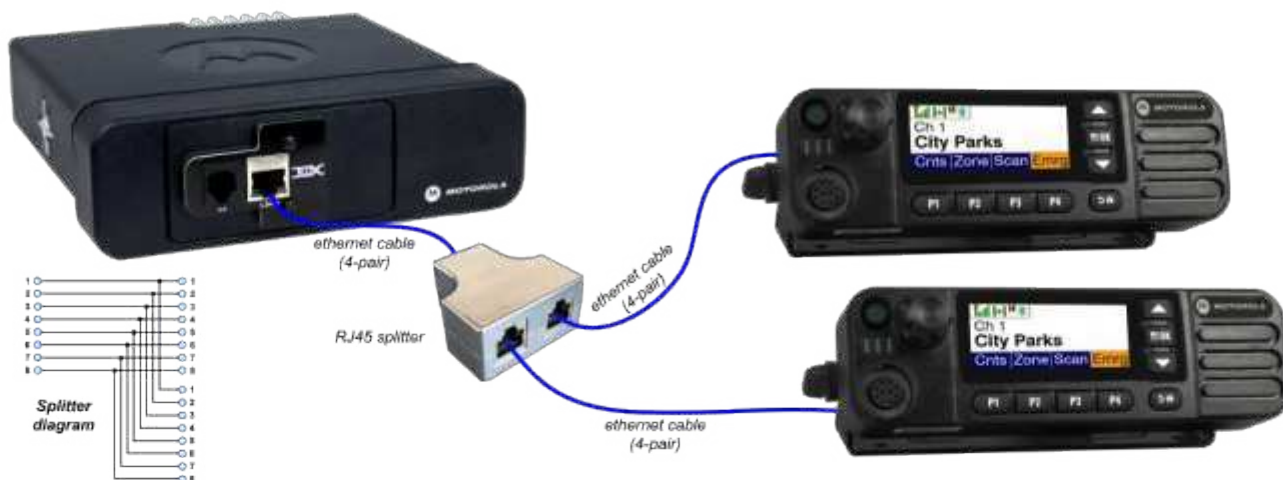


TRX DSR300M

Modules are connected using 4-pair ethernet cable (with RJ45 connectors). Standard straight ethernet cable. It is not IP device so it does not work in LAN/WAN network - only point to point connection is supported.



Control head modules can be connected without external power supply on distances up to 70m between radio module and control head module.

In case of distances over 70m external 12V power supply is necessary.

Connecting external 12V power supply activates individual control head volume control. Otherwise all control heads have one volume control from radio.

Before connecting external power supply - set correct volume level on radio.

Radio and control head have individual FW version. If Radio FW version is different from control head FW version - red LED would blink on control head. If control head was bought separately or is from radio with another FW version, control has to be connected to radio and user have to run firmware upgrade from CPS.



Attention!

Control head DSR300M modules are addressed (programmed address is shown on screen at startup).

Addresses of control heads connected to one radio has to be different

1. RJ11 Analog voice recorder output
2. RJ45 - modules data transmission connector
3. External 12V power supply input



TRX s.c.
ul. Wierzbowa 8
15-743 Białystok

tel. 00 48 662 88 11
biuro@trx.pl

TRX DSR300M INSTALLATION MANUAL

1



Remove radio front panel

2



Separate control head from radio

3

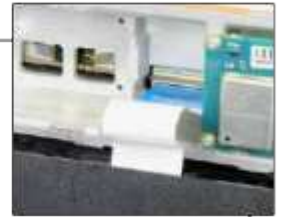


Unplug flat flex cable

4



Connect DSR300M radio module



5



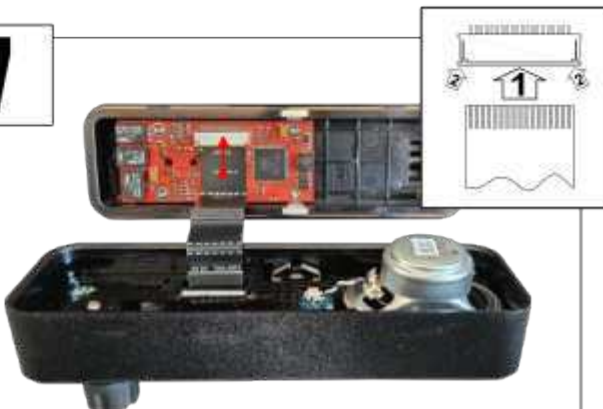
Close enclosure(carefully fit flex cable correctly)

6



Prepare DSR300M control head module and control head

7



Connect front panel flex cable to DSR300M control head module.
(it is ZIF connector, you have to pull gently on lock (2) put flex inside and push lock back)

8



Close enclosure(carefully fit flex cable correctly)